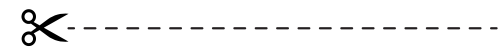
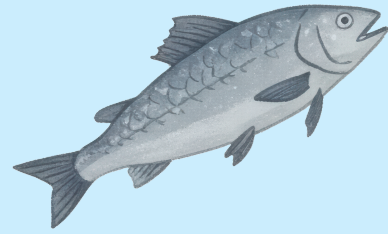


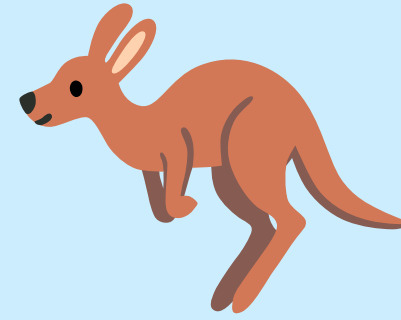
# Dhanggati Cards



dhipalayn



mandharr



wambuyn



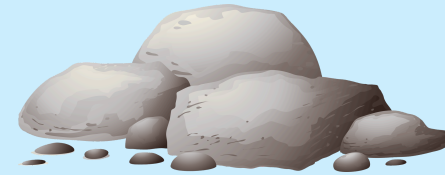
muna



yarri



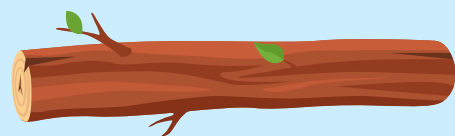
yatanggan



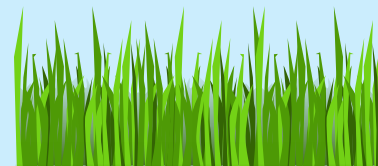
dharru



mitayn



garrgayi



gaaral

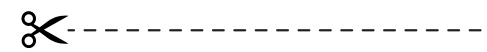


bita



yurra

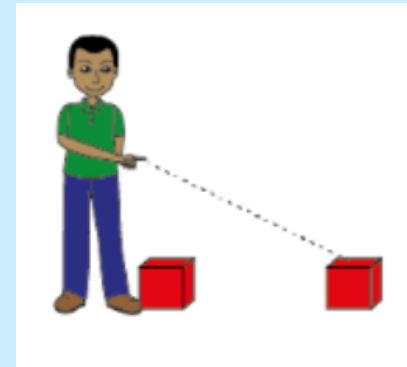
# Dhanguati Cards



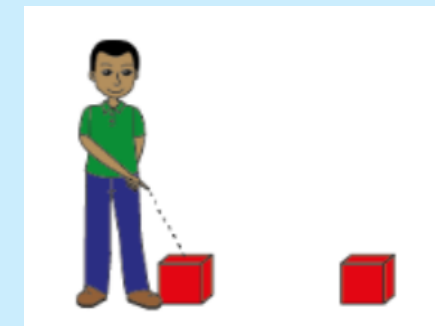
Miyang (what?)



Waa (where?)



nga'ang (that)



dhithiyn (this)

-a

rr

-ra

a, u

-ya

i

-da

n, l

-dha

yn

-ga

ng

.

?

# Dhanguwati Locative Chart

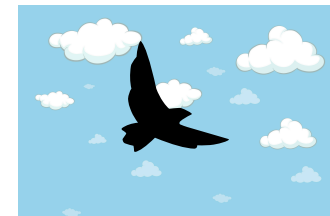
A locative suffix is a word ending added to show location or place and to indicate 'at' 'in' 'on' 'by'.

The locative suffix changes depending on the last sound of the word it tags, refer to the table below.

Root word	Word ending	Suffix	Example
yurra	a/u	-ra	yurrara
garrgayi	i	-ya	garrgayiya
gaaral	n/l	-da	gaaralda
mitayn	yn	-dha	mitayndha
garrkung	ng	-ga	garrkungga
mandharr	rr	-a	mandharr



= wambuyn gaaralda  
(kangaroo on grass)



= dhipalayn yurrara  
(bird in sky)


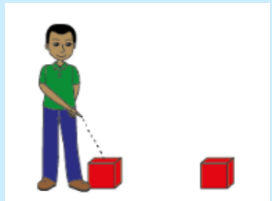


= yatanggan garrgayiya  
(frog on rock)

# Dhanguati Sentences


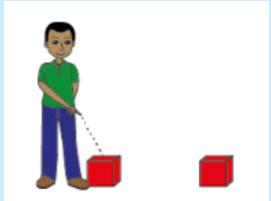
Cut out and use the locative and noun cards with the locative chart to build Dhanguati sentences.

Examples:

		?
Miyang (what?)	dhithiyn (this)	

What this?

What is this?

		.
mitayn	dhithiyn (this)	



Tree this.

This is a tree.

		?
Waa (where?)	dhipalayn	

Where bird?

Where is bird?

		-dha	.
dhipalayn	mitayn	yn	

Bird tree-in.

Bird in the tree.