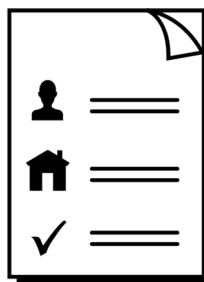




Student behaviour policy



Easy Read

About this booklet



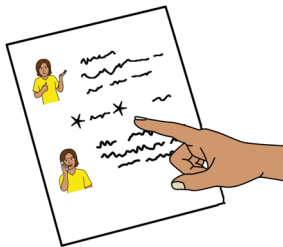
This booklet is from the NSW Government,
Department of Education.



This booklet is written in a way that is easy
to understand.



You can read more information about this policy
on our [student behaviour policy web page](https://education.nsw.gov.au/policy-library/policies/pd-2006-0316).
[https://education.nsw.gov.au/policy-library/policies/
pd-2006-0316](https://education.nsw.gov.au/policy-library/policies/pd-2006-0316)



We add a star before and after ***hard words***.
Then we explain what the words mean.



You can ask someone to help you read and
understand this booklet.



Contact information is at the end of this booklet.

Student behaviour policy



Our student behaviour policy says how students should behave to make sure schools are safe and ***inclusive***.

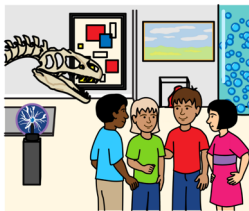


Inclusive means everyone gets the same opportunities.

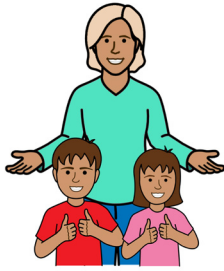


Student behaviour includes all behaviours when you are

- at school
- on the way to and from school
- outside of school when you are part of school activities
- using social media or other technology that involves other students or school staff.



About the policy



NSW Government schools work to make sure they show

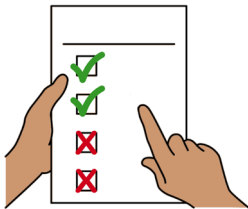
- positive behaviour



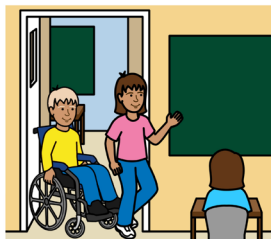
- safe behaviour



- inclusive education.



Schools support students to follow the rules in the ***Behaviour code for students***.



The Behaviour code for students shows how students should behave to make sure schools are safe and inclusive.



Bullying behaviour, including ***cyberbullying***, is not allowed.

Bullying means

- someone hurts or threatens someone else on purpose

- they do it more than once.



Cyberbullying is when someone uses the internet to be mean to someone else so they feel bad or upset.



Each school has their own plan for student behaviour, called a ***School Behaviour Support and Management Plan***.

The School Behaviour Support and Management Plan has information about how students should behave.

We will call it **the Plan**.



The Plan has information about

- how the school will help all students with their behaviour



- how the whole school can help to stop bullying.

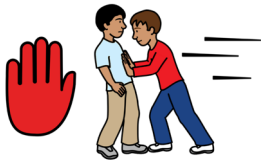


The Plan also has information about

- positive behaviour



- ***behaviours of concern***
 - a behaviour of concern might mean a student hurts someone else.



Sometimes schools need to do more when a student shows a behaviour of concern.

For example, detention or a timeout.



Behaviours of concern can affect

- teaching and learning



- how safe a person feels.



Schools might give a student a ***formal caution***.



A formal caution means the school tells a student that their behaviour is not ok.



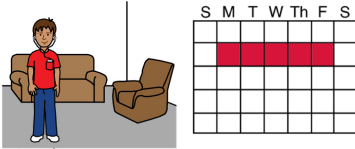
The school will send an email or letter to the student's family.



A formal caution can help the student and their parents or carers understand how the behaviour affects others.



If a student's behaviour does not get better or is serious the school might decide that ***suspension*** is needed.



Suspension means the student is removed from school for a short time.



Suspension gives the school time to plan how to support the student's behaviour.



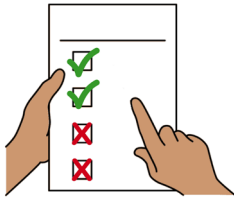
If the behaviour is very serious, the school might decide that ***expulsion*** is needed.

Expulsion means the student cannot return to the same school.



You can read about the Suspension and expulsion procedures on our [suspension and expulsion procedures web page](#)

<https://education.nsw.gov.au/policy-library/policyprocedures/pd-2006-0316/pd-2006-0316-06>



All behaviour support and management strategies follow the rules set by the department.



They must

- be fair and equal



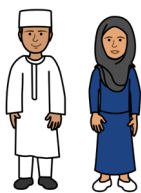
- be inclusive



- follow the right process.



Schools think about the best ways to help all students.

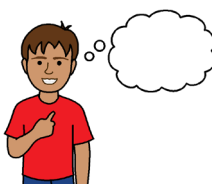


They think about

- culture



- disability



- each student's needs.

Why we made the policy



All students have a right to

- be safe at school



- take part in their learning



- be treated with respect



- say what they need and want.



Schools should be calm and safe places.



Schools with positive student behaviour help students learn better.

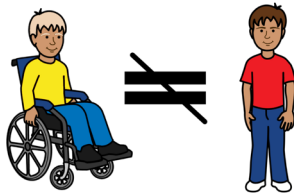


Schools should not have

- violence

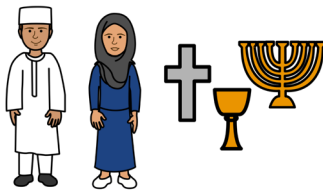


- bullying

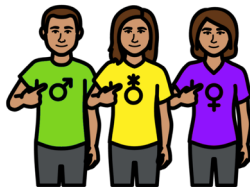


- ***discrimination***

- discrimination means a person does not treat another person fairly because of
 - their disability

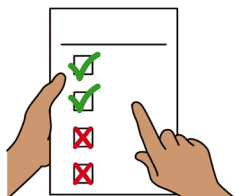


- their culture or religion



- their gender

- something else about them.



Principals, teachers and school staff follow the rules of this policy.



More information



For more information contact your school.



You can also contact the Director of Behaviour and Student Participation at the Department of Education.



Call 02 7814 3809



Email studentbehaviour@det.nsw.edu.au

Help to speak and listen



If you need help to speak or listen, the National Relay Service can help you make a call.



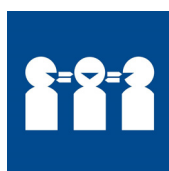
Call 1800 555 660



Website [NRS Helpdesk](https://www.accesshub.gov.au/about-the-nrs/nrs-helpdesk)

<https://www.accesshub.gov.au/about-the-nrs/nrs-helpdesk>

Help in your language



If you need help with other languages, contact the Translating and Interpreting Service.



Call 131 450



Website [TIS National](https://www.tisnational.gov.au)

<https://www.tisnational.gov.au>

Easy Read Australia created this Easy Read document in May, 2024 using Picture Communication Symbols (PCS). PCS and Boardmaker are trademarks of Tobii Dynavox LLC. All rights reserved. Used with permission. You must ask for permission to use the images in this document. For more information, please visit [Easy Read Australia](https://www.easyreadaust.com.au)
<https://www.easyreadaust.com.au>