

Curriculum guidance and contacts for DELs



Acknowledgement of Country

We recognise the Ongoing Custodians of the lands and waterways where we work and live. We pay respect to Elders past and present as ongoing teachers of knowledge, songlines and stories. We strive to ensure every Aboriginal and/or Torres Strait Islander learner in NSW achieves their potential through education.

Curriculum guidance and contacts for DELs

Published by NSW Department of Education

First published: February 2026

Department TRIM reference number: Record DOC25/2251017: Curriculum guidance and contacts for DELs

Document owned by Curriculum Directorate, Curriculum Implementation and Provision, School and System Leadership

Copyright and disclaimer

© State of New South Wales through NSW Department of Education, 2026. Information contained in this publication is based on knowledge and understanding at the time of writing, February 2026.

Contents

Curriculum guidance and contacts for DELs 4

Guidance and contacts K-12 5

Curriculum policy, procedures and standards K-12	6
DEL dotpoints	6
DEL survey and focus groups	6
Explicit teaching assessment and differentiation	7
Leading curriculum K-12	7
Leading effective curriculum implementation	7
Professional learning catalogue	7
Respectful Relationships Education K-12	8
Road Safety Education K-12	8
STEM Enrichment	8
Transition from primary to high school	8

Curriculum guidance, support and teaching resources K-6 9

Contact Primary Curriculum and policy K-6	10
Statewide Staffroom –Primary Curriculum	10
Creative Arts K-6	10
English K-6	10
HSIE K-6	10
Languages K-6	11
Mathematics K-6	11
PDHPE K-6	11
Science and Technology K-6	11

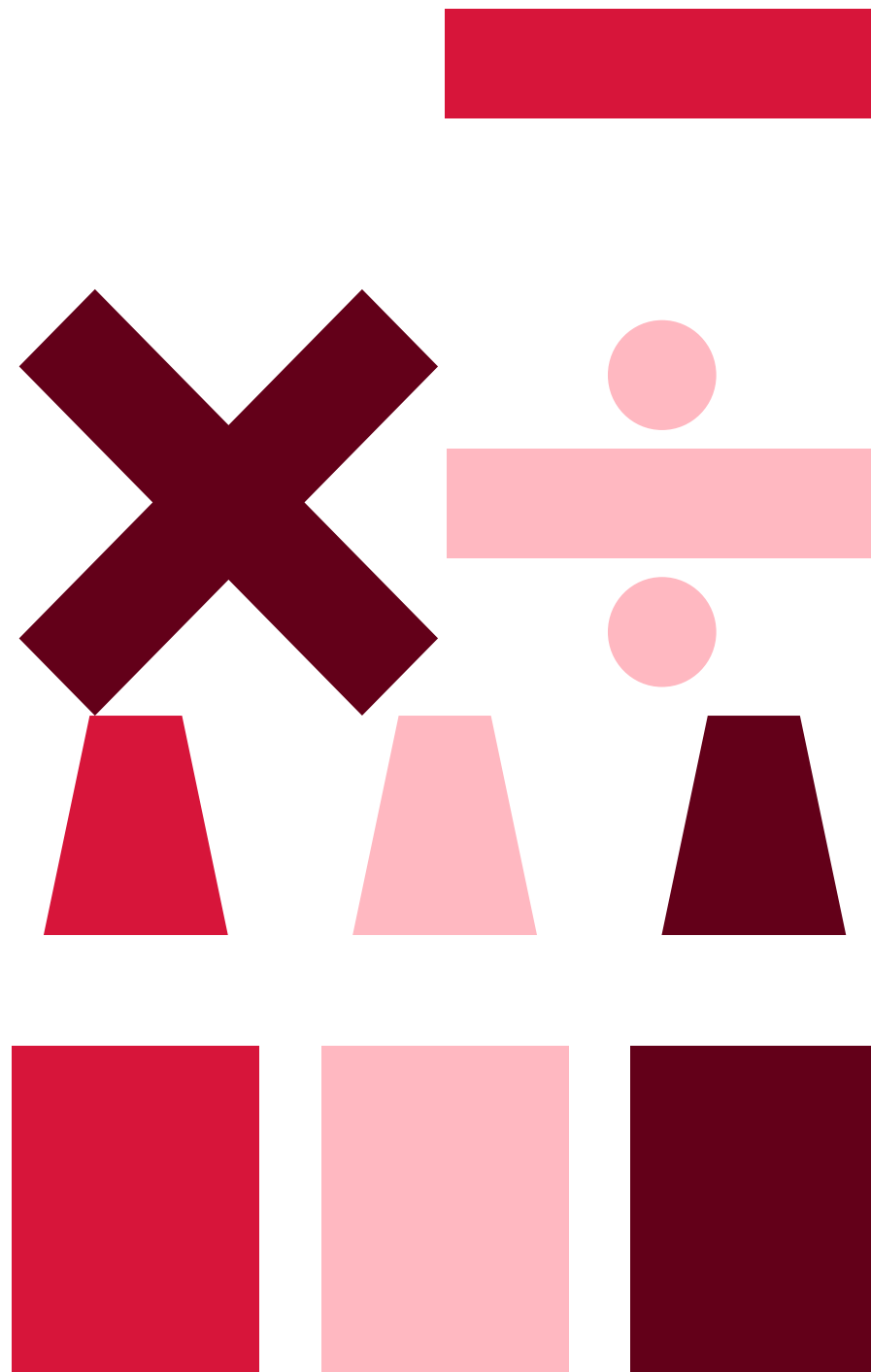
Curriculum guidance, support and teaching resources 7-12 12

Secondary Curriculum contact	13
Statewide Staffroom –Secondary Curriculum	13
Animals in schools	13
Creative Arts 7-12	14
Department approved elective courses	14
English 7-12	14
HSIE 7-12	15
Languages 7-12 and the Tanken Centre	15
Leading a whole school curriculum process in secondary	15
Mathematics 7-12	15
National Schools Constitutional Convention	16
PDHPE 7-12	16
Science 7-12	16
Stage 6 Support	17
TAS 7-12	17

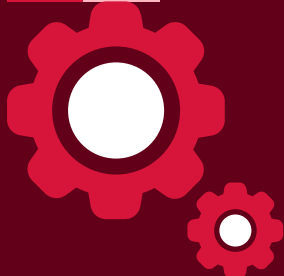
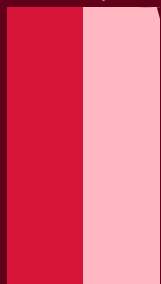
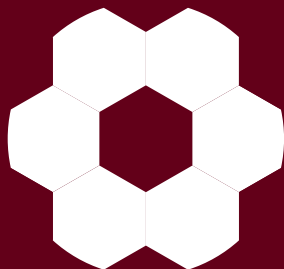
Curriculum guidance and contacts for DELs

Curriculum guidance and contacts for DELs supports new, relieving, acting and substantive Directors, Educational Leadership. The resource offers guidance and contacts to support DELs to lead curriculum, ensuring they have the necessary information to navigate their responsibilities.

This resource is regularly updated to reflect the latest information. All content is aligned to [Our Plan for NSW Public Education](#) and [School Excellence Framework version 3](#) (SEFv3). Each iteration will be promoted through the DEL weekly dotpoint email.



Guidance and contacts **K-12**



Guidance and contacts K-12

Please find below K-12 specific guidance and contacts to implement and lead curriculum.

Curriculum area	Information	Contact details
Curriculum policy, procedures and standards K-12	<p>For queries about:</p> <ul style="list-style-type: none">• Animal Welfare – schools procedures, contact Animalwelfare@det.nsw.edu.au• Controversial issues in schools procedures, contact SecondaryCurriculumCorrespondence@det.nsw.edu.au• Curriculum policy standards, contact PrimaryCurriculumCorrespondence@det.nsw.edu.au OR SecondaryCurriculumCorrespondence@det.nsw.edu.au• Excursions and variations of routine procedures, contact SchoolsPolicyExcursions@det.nsw.edu.au• Road safety education procedures, contact roadsafetyed@det.nsw.edu.au• parents/carers requesting exemption from parts of a course on religious grounds under Section 26 of the Education Act 1990, contact CurriculumEnquiry@det.nsw.edu.au	<p>For Curriculum policy, procedures and standards K-12 queries, please email the relevant address provided in information.</p>
DEL dotpoints	<p>The dotpoints provide succinct and current updates about curriculum resources and content during term time.</p> <p>The weekly dotpoints are sent to all members of the Teaching and Learning Priority Action Team (T+L PATs). The fortnightly dotpoints are published in the DEL fortnightly newsletter owned by Public Schools Directorate and sent to all DELs.</p>	<p>For DEL dotpoint queries, please email contactcurriculumimplementation@det.nsw.edu.au.</p>
DEL survey and focus groups	<p>The DEL survey and focus groups are an annual capture of the resources and supports that DELs would like to help them lead curriculum implementation. The survey is promoted through the dotpoints in Term 2, and 'opt in' focus groups are run in Term 3. Findings are used to inform curriculum supports for DELs for the following year.</p>	<p>For DEL survey and focus group queries, please email contactcurriculumimplementation@det.nsw.edu.au.</p>

Curriculum area	Information	Contact details
Explicit teaching Assessment Differentiation	<p>The explicit teaching webpages provide resources, advice, and professional learning to develop a shared understanding of explicit teaching and lead its implementation. The explicit teaching resources one-pager is available for download to explore the full suite of explicit teaching resources available and in development.</p> <p>Effective assessment advice offers advice and resources for leaders and teachers on assessment practices across K–12 classrooms.</p>	<p>The Effective Teaching Practices team can be contacted at contactcurriculumimplementation@det.nsw.edu.au.</p>
Leading curriculum K–12	<p>Access advice, resources and professional learning for school leaders to facilitate effective curriculum implementation. Supports are available for school planning, syllabus information for schools leaders and the phases of engage, enact and embed to guide curriculum implementation for all syllabuses K–12.</p> <p>Download the Leading curriculum for DELs (PDF 363 KB) resource for implementation strategies, question prompts and links to key resources to guide school leaders through the phases of curriculum implementation.</p> <p>Download the Leading curriculum K–12 one-pager (PDF 223.3 KB) to explore key advice and resources to support you to lead curriculum implementation.</p>	<p>The Leading curriculum K–12 team can be contacted at contactcurriculumimplementation@det.nsw.edu.au.</p>
Leading effective curriculum implementation	<p>Leading effective curriculum implementation (LECI) is a professional learning series that supports K–12 middle leaders to build a collective understanding of school leadership across NSW, aligned to the phases of curriculum implementation. Visit the Leading effective curriculum implementation (LECI) webpage for the course overview and enrolment information and to view two illustrations of practice.</p> <p>Leading effective curriculum implementation (LECI) is also a NESA recognised program (LECI as a NRP). For one module only, highly accomplished teacher applicants can complete a NESA recognised program and be verified for successfully demonstrating between 6 and 10 standard descriptors at the highly accomplished level. To find out more about LECI as a NRP visit the LECI as a NESA recognised program webpage.</p>	<p>The LECI team can be emailed at contactcurriculumimplementation@det.nsw.edu.au.</p>
Professional learning catalogue	<p>The Professional Learning catalogue is an interactive PDF available on the Professional learning 2026 webpage. Two catalogues are released each term, with a Staff Noticeboard article posted for every new release. Teachers and leaders can discover and register for the professional learning on offer each term to support curriculum, teaching and learning.</p>	<p>For professional learning queries, please contact curriculumk-12professionallearning@det.nsw.edu.au.</p>

Curriculum area	Information	Contact details
Respectful Relationships Education K–12	Access resources, advice and professional learning to support implementation of Respectful Relationships Education in schools.	The Respectful Relationships Education (RRE) team can be contacted at RRE-schools@det.nsw.edu.au .
Road Safety Education K–12	Access resources, advice and professional learning to support implementation of Road safety education in schools K–12.	The Road Safety Education team can be contacted by emailing roadsafetyed@det.nsw.edu.au .
STEM Enrichment	<p>The STEM Enrichment team leads the department’s K–12 STEM strategy and coordinates key programs including the STEM Industry School Partnerships, Academies of STEM Excellence, and the NSW Virtual STEM Academy.</p> <p>The team delivers professional learning and creates teaching resources and guides for K–12 STEM classes and the department approved elective iSTEM course.</p> <p>Further information can be found in the STEM Statewide Staffroom and by visiting the STEM Enrichment website.</p>	The STEM Enrichment team can be contacted at stem@det.nsw.edu.au .
Transition from primary to high school	The Transition from primary to high school page provides schools with a suite of resources to support continuity of learning. Resources include guidance for evaluating and planning transition, access to a series of school-facilitated workshops , implementation and progress monitoring samples and illustrations of practice showcasing how networks implement effective transition strategies .	For more information on how to strengthen and support primary to high school transition, email contact_curriculumimplementation@det.nsw.edu.au .



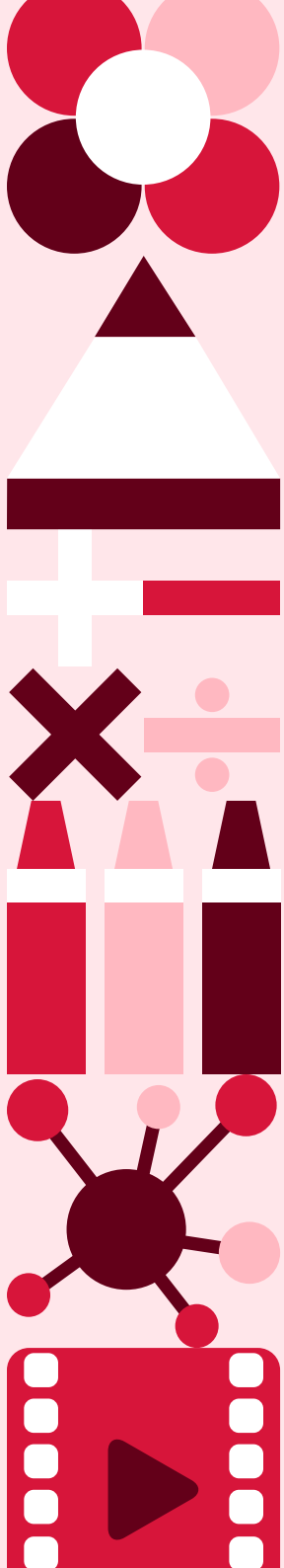
Primary curriculum guidance, support and teaching resources **K-6**

Primary curriculum guidance, support and teaching resources K–6

Please find below K–6 curriculum guidance, support and teaching advice, to implement and lead curriculum in your schools K–6.

Curriculum area	Information	Contact details
Contact Primary Curriculum and policy K–6	<p>The Primary Curriculum, Teaching and Learning team provide advice and support related to general curriculum and policy.</p> <p>General curriculum and policy advice and resources for K–6 can be found on the Teaching practice section of the Curriculum webpage.</p> <p>Online professional learning sessions for all key learning areas are held regularly and advertised through Staff Noticeboard, Primary Curriculum Statewide Staffroom and the DEL dot points.</p>	<p>The Primary Curriculum, Teaching and Learning team can be contacted on TandLK-6@det.nsw.edu.au.</p>
Statewide Staffroom - Primary Curriculum	<p>The Statewide Staffroom for Primary Curriculum connects DELs, school leaders, and teachers to teaching and learning support for syllabus agnostic and Key learning areas (KLAs).</p> <p>Join curriculum specialists in statewide staffrooms set up in Microsoft Teams for expert advice, resources and professional learning.</p>	<p>The Statewide Staffroom – primary curriculum team can be contacted on TandLK-6@det.nsw.edu.au.</p>
Creative Arts K–6	<p>The primary Creative Arts curriculum team provide advice and support related to implementation of the Creative Arts K–6 Syllabus.</p> <p>Creative Arts teaching and learning resources can be found at Creative Arts K–12.</p> <p>Microlearning modules can be accessed via the Creative Arts K–6 professional learning catalogue.</p>	<p>The primary Creative Arts curriculum team can be contacted at CreativeartsK-6@det.nsw.edu.au.</p>
English K–6	<p>The primary English curriculum team provide advice and support related to primary English syllabus implementation.</p> <p>Resources to support English teaching and learning can be found at English K–12.</p>	<p>The primary English curriculum team can be contacted at Englishk6@det.nsw.edu.au.</p>
HSIE K–6	<p>The primary HSIE curriculum team provide advice and support related to implementation of the HSIE K–6 Syllabus.</p> <p>HSIE teaching and learning resources can be found at HSIE K–12.</p> <p>Microlearning modules can be accessed via the HSIE K–6 professional learning catalogue.</p>	<p>The primary HSIE curriculum team can be contacted at HSIEK-6@det.nsw.edu.au.</p>

Curriculum area	Information	Contact details
Languages K–6	<p>The primary Languages team provide advice and support on the Primary Languages networks, and the teaching of Modern Languages, Classical Languages and Auslan in NSW primary schools.</p> <p>Access resources which support Language teaching and learning at Planning, programming and assessing languages K–6.</p>	<p>The primary Languages team can be contacted at primlang@det.nsw.edu.au.</p> <p>For specific queries about teaching Aboriginal Languages in primary schools, please contact: aboriginallanguagesandculturescorro@det.nsw.edu.au.</p>
Mathematics K–6	<p>The primary Mathematics curriculum team provide advice and support related to primary Mathematics syllabus implementation.</p> <p>Resources to support Mathematics teaching and learning can be found at Mathematics K–12, and the Lesson Library.</p>	<p>The primary Mathematics curriculum team can be contacted at mathematicsk6@det.nsw.edu.au.</p>
PDHPE K–6	<p>The primary PDHPE curriculum team provide advice and support related to implementation of the PDHPE K–6 syllabus.</p> <p>PDHPE teaching and learning resources can be found at the PDHPE curriculum website.</p> <p>Microlearning modules can be accessed via PDHPE K–6 professional learning catalogue.</p>	<p>The primary PDHPE curriculum team can be contacted at pdhpek6@det.nsw.edu.au.</p>
Science and Technology K–6	<p>The primary Science and Technology curriculum team provide advice and support related to implementation of the Science and Technology K–6 Syllabus.</p> <p>Science and Technology teaching and learning resources can be found at Planning, programming and assessing science and technology K–6 (2024).</p> <p>Microlearning modules can be accessed through the Science and technology K–6 professional learning catalogue.</p>	<p>The primary Science and Technology curriculum team can be contacted at scienceandtechnologyk6@det.nsw.edu.au.</p>



Secondary curriculum guidance, support and teaching resources 7-12

Secondary curriculum guidance, support and teaching resources 7–12

Please find below 7–12 curriculum guidance, support and teaching advice to implement and lead curriculum in your schools 7–12.

Curriculum area	Information	Contact details
Secondary Curriculum contact	<p>The Secondary Curriculum, Teaching and Learning team provide advice and support related to leading whole school curriculum processes and general secondary curriculum and policy. Additional supports are available at Leading secondary teaching and learning.</p> <p>Online professional learning sessions are held regularly and advertised through Staff Noticeboard, Secondary Teaching and Learning Statewide Staffroom, Curriculum Statewide Staffroom and through the DEL dot points.</p>	<p>The Secondary Curriculum, Teaching and Learning team can be contacted on secondaryteachingandlearning@det.nsw.edu.au.</p>
Statewide Staffroom – Secondary Curriculum	<p>The Statewide Staffrooms for Secondary Curriculum connects DELs, school leaders, and teachers to teaching and learning support for general syllabus information and key learning areas (KLAs).</p> <p>This collaborative space provides updates, resources, and discussion forums for curriculum implementation, programming, and professional learning.</p> <p>Join our curriculum specialists in a statewide staffroom set up in Microsoft Teams for expert advice, resources and professional learning.</p> <p>A designated DEL channel in the Secondary Teaching and Learning statewide staffroom provides specifically curated curriculum implementation and leadership support for DELs, including curriculum compliance supports and advice.</p>	<p>The Statewide Staffroom – Secondary Curriculum team can be contacted at secondaryteachingandlearning@det.nsw.edu.au.</p>
Animals in schools	<p>The Animals in schools team provide advice and support about working with animals in schools.</p> <p>More detailed information is available at Animals in schools and Animals in schools – compliance information for principals.</p>	<p>The Animal Welfare Coordinator can be contacted at animalwelfare@det.nsw.edu.au.</p>

Curriculum area	Information	Contact details
Creative Arts 7–12	<p>The Creative Arts curriculum 7–12 team provide advice and support related to engaging with, enacting and embedding Creative Arts 7–12 curriculum.</p> <p>Access sample resources including units at Planning, programming and assessing Creative Arts 7–10 and Planning, programming and assessing Creative Arts 11–12.</p> <p>Microlearning courses are also available through MyPL for Dance 7–10, Drama 7–10, Music 7–10 and Visual Arts 7–10.</p> <p>Professional learning events are delivered around the state as well as being hosted and recorded regularly in the Creative Arts Statewide Staffroom.</p>	<p>The Creative Arts curriculum 7–12 team can be contacted at CreativeArts7-12@det.nsw.edu.au.</p>
Department approved elective courses	<p>The department has developed a suite of 10 elective courses that can be delivered in Stage 5. Department approved elective courses can make up a maximum of 200 hours of the mandatory 400 hours of electives. If a school chooses to deliver a department approved elective course, students and their parents or carers must be consulted and understand that the course will not be listed on the RoSA.</p> <p>Schools must complete a registration form for each course in each year that the course is delivered. Registration opens in Term 3 each year for the following school year.</p>	<p>The Secondary Curriculum, Teaching and Learning team can be contacted at secondaryteachingandlearning@det.nsw.edu.au for further information.</p>
English 7–12	<p>The English curriculum 7–12 team provide advice and support for all English 7–12 syllabus implementation requirements.</p> <p>Access sample programs with teacher and student-facing activities and assessment samples at Planning, programming and assessing English 7–10 and Planning, programming and assessing English 11–12.</p> <p>Microlearning courses can be found at English 7–10 and English 11–12.</p> <p>Professional learning events are delivered across the state and via the English statewide staffroom.</p>	<p>The English curriculum 7–12 team can be contacted at English.Curriculum@det.nsw.edu.au.</p>

Curriculum area	Information	Contact details
HSIE 7–12	<p>The HSIE curriculum 7–12 team provide advice and support for all HSIE 7–12 syllabus implementation requirements.</p> <p>Supporting resources including programming, planning and assessment advice for all HSIE 7–12 syllabuses can be accessed online at Planning, programming and assessing HSIE 7–10 and Planning, programming and assessing HSIE 11–12.</p> <p>Microlearning courses that address key aspects of HSIE teaching in Geography 7–10 and History 7–10 are also available through MyPL.</p> <p>Professional learning events are delivered across the state and via the HSIE statewide staffroom.</p>	<p>The HSIE curriculum 7–12 team can be contacted at hsie@det.nsw.edu.au.</p>
Languages 7–12 and the Tanken Centre	<p>The Languages and Culture team provide advice and support relating to Modern Languages, Classical Languages and Auslan.</p> <p>Online professional learning sessions are held regularly through the Languages statewide staffroom.</p> <p>The team also oversees language teacher networks across NSW, including the Virtual Languages Mentoring Network (for teachers in their first 5 years of languages teaching) and the Tanken Centre, for teachers and students of Japanese.</p>	<p>The Languages and Culture team can be contacted at LanguagesandCulture@det.nsw.edu.au.</p>
Leading a whole school curriculum process in secondary	<p>The Leading a whole school curriculum process – illustration of practice is a key resource designed to support leaders and teachers in implementing effective whole-school curriculum practices. It provides examples of how teaching and leadership practices can be applied consistently across secondary schools to improve student learning outcomes.</p>	<p>For more information contact the Secondary Curriculum, Teaching and Learning team at secondaryteachingandlearning@det.nsw.edu.au.</p>
Mathematics 7–12	<p>The Mathematics curriculum 7–12 team provide advice and support related to Mathematics syllabus implementation, programming, assessment, reporting, policy, and pedagogy.</p> <p>Online professional learning sessions are held regularly through the Mathematics Statewide Staffroom and recordings of previous sessions can be accessed via the Mathematics Statewide Staffroom or the Mathematics Professional Learning page. The team is also available to deliver in-person professional learning for teacher networks upon request.</p>	<p>The Mathematics curriculum 7–12 team can be contacted at mathematics7-12@det.nsw.edu.au.</p>

Curriculum area Information

Contact details

National Schools Constitutional Convention

The National Schools Constitutional Convention is an annual event that supports Year 11 and 12 students to explore the Australian Constitution. For further information and details on how to apply, please visit the [National Schools Constitutional Convention](#) webpage.

The Secondary Curriculum, Teaching and Learning team can be contacted at secondaryteachingandlearning@det.nsw.edu.au for further information.

PDHPE 7-12

The PDHPE curriculum 7-12 team provide advice and support related to PDHPE 7-12 syllabus implementation, programming, assessment, reporting, policy and pedagogy.

Online professional learning sessions are held regularly through the [PDHPE Statewide staffroom](#). Recordings of previous sessions can be accessed via the [professional Learning channel](#) in the PDHPE Statewide staffroom.

Microlearning courses that address key aspects of PDHPE teaching and learning are available through [MyPL](#). Professional learning specifically for Health and Movement Science 11-12 can be found at [MyPL](#).

Supporting teaching and learning resources including programs and student-facing activities and assessment samples for all syllabuses in PDHPE 7-12, can be accessed via [Planning, programming and assessing PDHPE 7-10](#) and [Planning, programming and assessing PDHPE 11-12](#).

Additional support for how schools can manage controversial issues and diverse perspectives on sensitive topics related to the PDHPE 7-12 curriculum can be accessed via [Controversial issues in schools](#) procedures.

The PDHPE curriculum 7-12 team can be contacted at PDHPEcurriculum@det.nsw.edu.au.

Science 7-12

The Science curriculum 7-12 team provide advice and support related to Science syllabus implementation, programming, assessment, reporting, policy, and pedagogy.

Online professional learning sessions are held regularly through the [Science Statewide Staffroom](#). Recordings of previous sessions can be accessed via the professional learning channel in the [Science Statewide Staffroom](#). The team is also available to deliver in-person professional learning for teacher networks upon request.

Access supporting teaching and learning resources for all syllabuses in Science 7-12 at [Planning, programming and assessing science 7-10](#) and [Planning, programming and assessing science 11-12](#).

Microlearning courses that address key aspects of science teaching and learning are also available through [MyPL](#).

The Science curriculum 7-12 team can be contacted at science7-12@det.nsw.edu.au.

Curriculum area	Information	Contact details
<p>Stage 6 Support</p>	<p>The Stage 6 Strategy outlines the department’s model of support for Stage 6 syllabuses. It incorporates the development of resources, professional learning and advice to support Stage 6 teachers and school leaders to effectively implement the Stage 6 curriculum.</p> <p>For Stage 6 professional learning check the PL catalogue released each term and encourage all schools to join Statewide Staffrooms.</p> <p>Stage 6 monitoring implementation and support is provided to assist schools to develop monitoring procedures to ensure the delivery of Preliminary and HSC courses comply with NESAs and department requirements. Available supports include the 2026 HSC monitoring advice, HSC monitoring illustrations of practice, and preventing and managing malpractice in Stage 6 school-based assessment document.</p> <p>Common Start funding and drop-in sessions are held periodically in the Teaching and Learning 7–12 statewide staffroom.</p>	<p>Contact the Stage 6 Strategy team at secondaryteachingandlearning@det.nsw.edu.au for further assistance.</p>
<p>TAS 7–12</p>	<p>The TAS curriculum 7–12 team provide advice and support for all TAS 7–12 syllabus implementation requirements.</p> <p>Professional learning events are delivered across the state and via the TAS Statewide Staffroom.</p> <p>Sample programs with teacher and student-facing activities and assessment samples can be found at Planning, programming and assessing TAS 7–10 and Planning, programming and assessing TAS 11–12.</p> <p>Microlearning courses are also provided via MyPL just search for TAS.</p>	<p>The TAS curriculum 7–12 team can be contacted at tas@det.nsw.edu.au.</p>

NSW Department of Education

105 Phillip Street
Parramatta NSW 2150

GPO Box 33
Sydney NSW 2001

Office hours:
Monday to Friday
9:00am to 5:00pm

Head office 1300 679 332

education.nsw.gov.au

